

# HFX™

## PLURAL-COMPONENT HYDRAULICALLY DRIVEN METERING UNIT

- Ideally suited for open cavity fill applications
- Low to medium output polyurethane molding and cavity fill system
- Integrated hydraulic system operates both metering pumps and mixing head, eliminating costly hydraulic power packs
- Electronic controls for precise shot sequencing and hose heat temperature
- Pre-heaters are constructed without o-rings; the heaters are virtually service-free
- Safe and reliable low voltage hose heating system

*Featuring Gusmer's precision built, industrial grade hydraulic GX-14 Mixing Head*



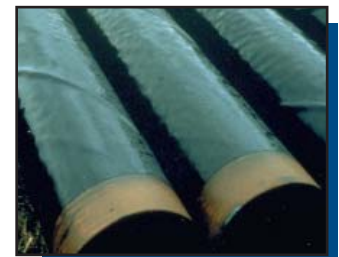
*HFX shown with optional material supply pumps.*



*Cavity Fill*



*Automotive*



*Manufacturing*



## Technical Data

	<u>U.S.</u>	<u>Metric</u>
Maximum Output:	16 lbs/min	7 kg/min
Maximum Rated Pressure:	1600 psi	110 bar
Viscosity:	250-3000 cps	250-3000 cps
Electrical:	50 amps @ 3 x 230v; 50/60 Hz	19 kw
Weight:	350 lbs	160 kg
Dimensions:	H=50 in/ W=40 in/ D=30 in	H=127 cm/ W=102 cm/ D=76 cm
Maximum Supply Pressure:	250 psi	17 bars

## Standard Features

**Hydraulic Drive:** A double acting hydraulic cylinder drives Gusmer's FF pumps by a self-actuating reversing system. Hydraulic power is supplied through a positive displacement pump driven by a 3 HP motor. Pressure is variable to the system through an adjustable compensator on the pump. A positive displacement gear pump provides pressure required to activate dispensing gun.

**Metering Pumps:** The Hydraulic HFX is equipped with positive displacement, double acting piston pumps. Hard chrome plated piston rods and cylinder walls provide one of the most reliable pumping systems available. Over-pressure safety switches on each pump deactivate the control circuit and pumping action should pressure limits be exceeded.

**Cam Follower Guide Connecting Yoke:** Eliminates asymmetrical loading and increases pump packing life by assuring proper alignment and balance between hydraulic cylinder and pumps.

**Pump Retract:** Positions the pump shaft completely within the cylinder during shut down to provide longer packing life.

**Externally Accessible Valve Balls:** Innovative pump design incorporates readily serviceable valve balls and removable ball seats without having to completely disassemble the pump.

**Completely Mobile:** The lightweight, compact design of the Hydraulic HFX allows for simple mobility around your plant. The casters can be removed and the caster holes used for permanent mounting.

**Gusmer TX-50 Processor:** Provides 100 separate programmable channels for automatic shot selection. The Gusmer TX-50 encoder ensures that the processor automatically dispenses a metered amount of material.

**Electric Stroke Counter:** An electrical stroke counter enables the operator to keep accurate records of materials used and to compute chemical yield.

**In-Line Filter Screens:** Protects valve balls and gun components from fouling due to unwanted dirt and particles in the system. Screens are easily removed for cleaning or replacement.

**Open Construction:** The unit is designed to offer easy access to all components.

**Oversized Hydraulic Reservoir:** Reduces operating temperature.

**Automatic Hose Heat:** Provides completely automatic temperature control of the hose heater. The temperature is measured through a remote temperature sensing unit (TSU) strategically located inside the heated hose. Digital temperature display allows the operator a simplified, convenient method of viewing operating parameters.

## Optional Features

**Material Supply:** To insure complete filling of the HFX metering pumps, both components should be pressure fed using Gusmer 2:1 air operated transfer pumps. Material should be protected from atmospheric moisture.

**Auxiliary Proportioning Pump:** Auxiliary pump assemblies are available and can be field retrofitted to meter one or two additional chemical components such as resin, blowing agent, catalysts, flame retardants, and coloring.

**Hoses:** 35' foot min. hose length (10.67 m).  
For additional hose lengths consult factory.  
1/4" x 10' (.64 cm x 3 m)  
3/8" x 50' (.95 cm x 15.2 m)

**Varied Ratio Operation:** The Hydraulic HFX will process a wide range of system ratios from 1:4 to 4:1. The fixed ratio adjustment is made by substituting smaller or larger metering pumps of various sizes. All pump sizes are interchangeable and can be ordered through Gusmer to fit custom applications.

**Air Dryer System:** An Air Dryer protects material from atmosphere moisture, permitting material to be pumped from supply containers in a totally cooled environment.

### Featuring Gusmer's precision built, industrial grade GX-14 Mixing Head



- Mechanical Self-Cleaning
- Metal to Metal Sealing
- Mixing Chamber
- Direct Impingement Mixing
- Hydraulic Operation
- Pistol Grip or Pour Handle
- Mixing Head Orifices
- Quick Disconnect Coupling Block

WARNING: The equipment described herein must only be operated or serviced by properly trained individuals, thoroughly familiar with the operating instructions and limitations of the equipment.

NOTICE: All statements, information and data given herein are believed to be accurate and reliable but are presented without guarantee, warranty or responsibility of any kind expressed or implied. Statements or suggestions concerning possible use of GUSMER Equipment are made without representation or warranty that any such use is free of patent infringement, and are not recommendations to infringe any patent. The user should not assume that all safety measures are indicated or that other measures may not be required.

NOTE: All standard and service specifications identified on this GUSMER technical sales flyer are based on U.S. standards.

Part No.: #SLHFX

8/2002

**GUSMER**  
CORPORATION

One Gusmer Drive • PO Box 2055  
Lakewood, New Jersey USA 08701-8055  
Phone: (732) 370-9000 • Toll Free: 1-800-367-4767  
Fax: (732) 905-8968 • Email: [info@gusmer.com](mailto:info@gusmer.com)  
Visit Our Website At: <http://www.gusmer.com>