

AVAILABLE OPTIONS

Autofill System

- Automatically controls day tank liquid levels.
- Can operate from a variety of different feed pumps including bulk storage.

Double Wall Jacketed Raw Material Tanks

- Provide more precise temperature control in conjunction with heat exchangers and tank agitators.
- Available in several sizes

Tank Agitators

- Maintain uniform temperature and chemical composition.
- Variable speed setting improves process control.
- Prevents separation of the chemical components.
- Electro-Pneumatic tank agitators provide the operator with the option to drive the agitators with either an electric motor or pneumatic motor.

Regenerative Air Dryer

- Provides dry air to -40° C to the Day Tanks.

Multi-Station Ringline

- Permits the connection of several mix heads to a single metering unit.

Power Assisted Pneumatic Boom System

- Air assisted boom provides automatic manipulation of the mix head with a vertical travel of 20" (51 cm) and a horizontal swivel of 120°.

Color Dosing Unit

- Designed with the CDC pumping concept, Gusmer-Admiral's color dosing unit provides unlimited shot sizes to one or several mixing heads.
- 2 Color dosing units on a single frame are available.

Remote Operation Pendant Control

- 25 ft. remote pendant allows convenient access to operational controls such as dispense, emergency shut-off, and shot time selection.

Variable Speed Metering Pump Drives with Closed Loop Control

Optional Magnetic Drive on all metering pumps systems

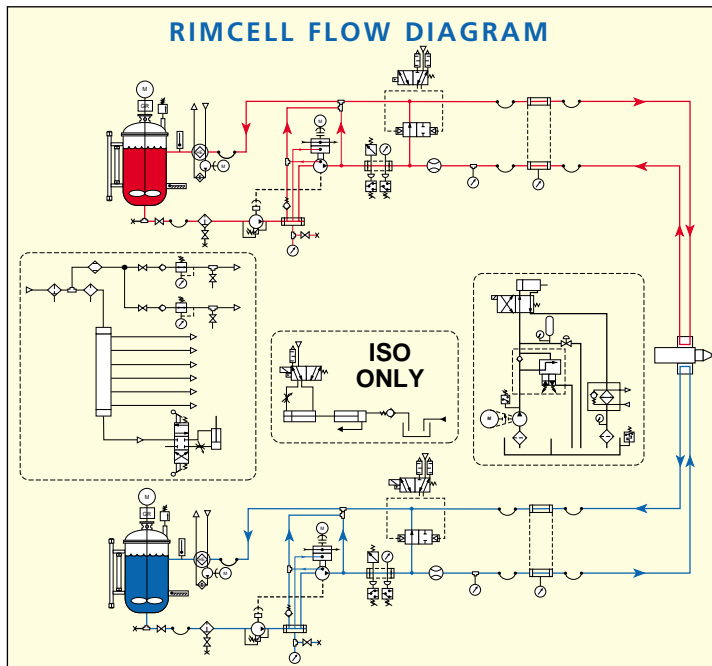
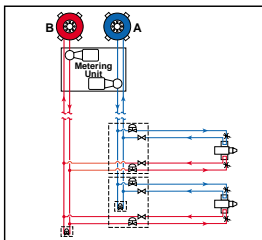
Process Monitoring Package

Can be provided with Rex Roth A2VK Open Loop Pumps

RimCell Series

TECHNICAL SPECIFICATIONS

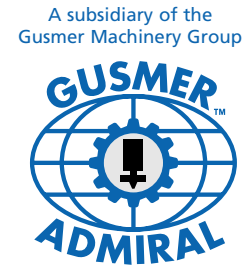
U.S. Specifications at 60 Hz (Metric Specifications at 50 Hz)	RimCell 50	RimCell 100	RimCell 240	RimCell 320
Max. Throughput-lbs/min (Kg/min)	50 (23.6)	100 (38)	240 (91)	320 (145)
Ratio Range, Variable	1:5 to 5:1	1:5 to 5:1	1:5 to 5:1	1:5 to 5:1
Power Required at 230V-amps	136	180	N/A	N/A
Power Required at 460V-amps	68	82	120	150
Max. Working Pressure-PSI (bar)	3000 (207)	3000 (207)	3000 (207)	3000 (207)
Floor Space-Sq. Ft. (Meters Sq.)	50 (5)	50 (5)	50 (5)	50 (5)
Approximate Dry Weight-lbs. (Kg.)	1500 (680)	1500 (680)	2000 (907)	2200 (998)
Plant Air Required	2-5 cfm @ 100 psig when using a 60 gallon tank reservoir and optional agitator.			



DeltaRim Series Metering Units are available for processing filled or high viscosity RIM, SRIM, and RRM systems.

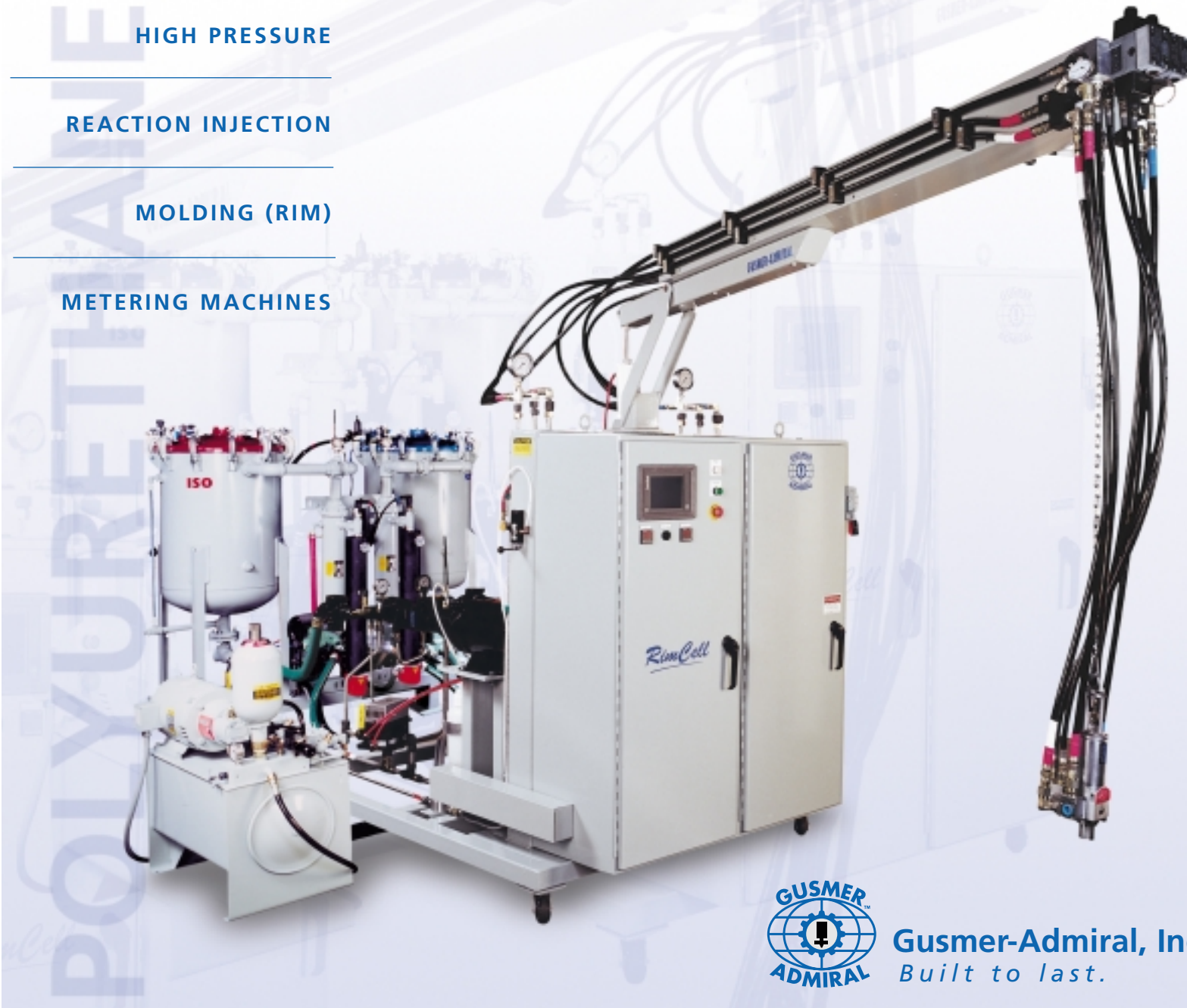
CALL TODAY
TO ARRANGE A DEMONSTRATION
OR CHEMICAL SYSTEM TRIAL
1-800-746-1330

See our website for complete information about all of our RIM equipment: www.gusmer-admiral.com



Gusmer-Admiral, Inc.
305 West North Street, Akron, Ohio 44303 U.S.A.
Phone: (330) 253-1353 Fax: (330) 253-7715
Email: info@gusmer-admiral.com

RimCell Series



- HIGH PRESSURE
- REACTION INJECTION
- MOLDING (RIM)
- METERING MACHINES



WARNING: The equipment described herein must only be operated or serviced by properly trained individuals, thoroughly familiar with the operating instructions and limitations of the equipment.
NOTICE: All statements, information and data given herein are believed to be accurate and reliable but are presented without guarantee, warranty or responsibility of any kind expressed or implied. Statements or suggestions concerning possible use of GUSMER-ADMIRAL Equipment are made without representation or warranty that any

such use is free of patent infringement, and are not recommendations to infringe any patent. The user should not assume that all safety measures are indicated or that other measures may not be required.
NOTE: All standard and service specifications identified on the GUSMER-ADMIRAL technical sales flier are based on U.S. standards.



TURNKEY PRODUCTION LINES



HIGH PERFORMANCE MIXING HEADS



BULK STORAGE SYSTEMS

RimCell Series

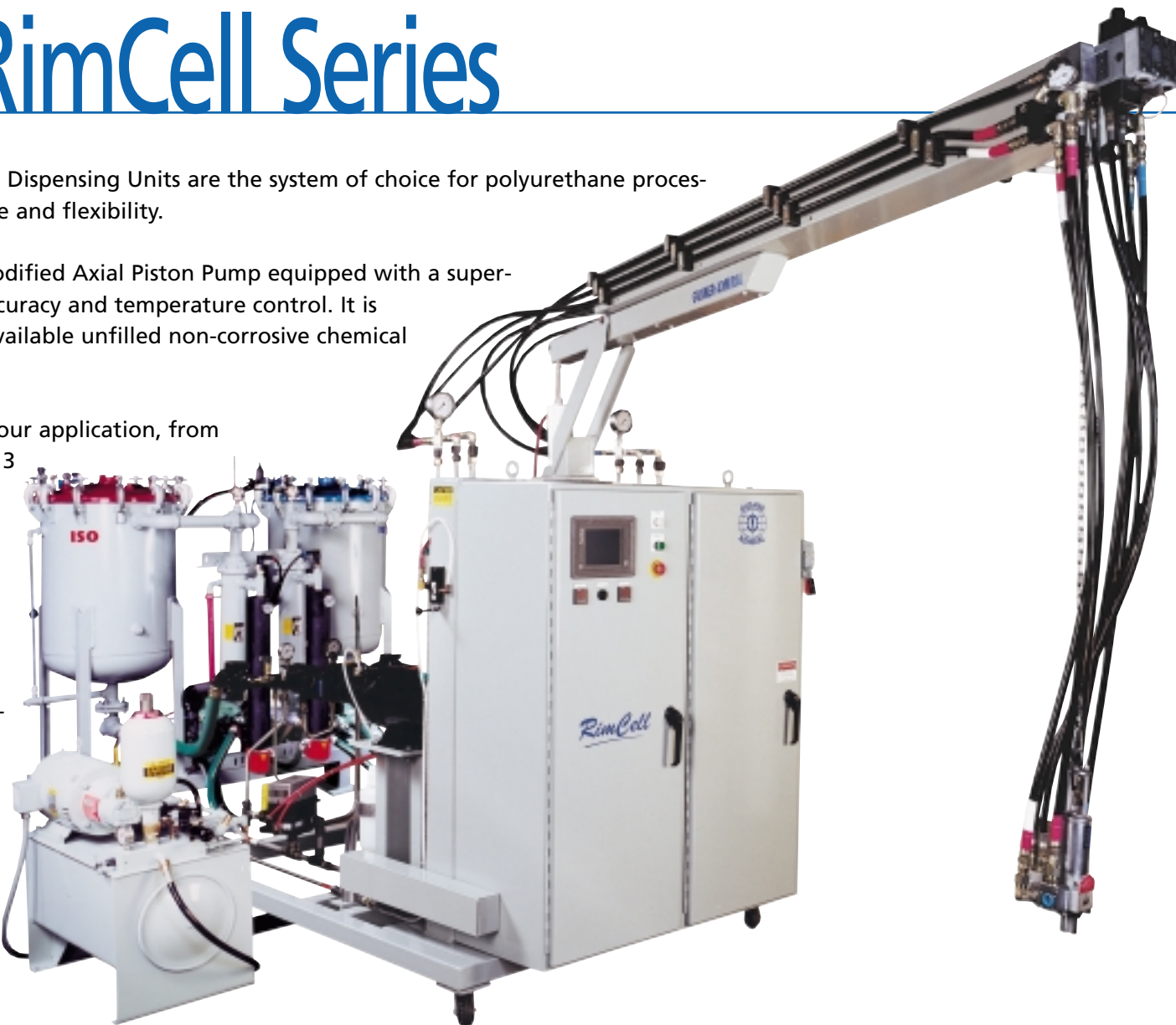
Gusmer-Admiral's RimCell Metering and Dispensing Units are the system of choice for polyurethane processors who demand optimum performance and flexibility.

The foundation of the RimCell is the Modified Axial Piston Pump equipped with a super-charger for unprecedented metering accuracy and temperature control. It is designed to process any commercially available unfilled non-corrosive chemical system up to 3000 cps.

The RimCell can be customized to suit your application, from simple to complex. It will accommodate 3 or 4 metering streams, and can be equipped with several different sized metering pumps in order to handle skewed ratios.

Throughputs range from 50 lbs. per minute to 320 lbs. per minute

The modular design permits the installation of auxiliary components such as temperature control units, multi-station ringlines, and color dosing units. The RimCell is available in all standard voltages, and can be outfitted with Allen Bradley, Mitsubishi, Siemens, and L/G programmable logic controllers.



GUSMER-ADMIRAL MODIFIED AXIAL PISTON PUMP

The foundation of the RimCell system is the supercharged axial piston metering pump featuring critical modifications designed and manufactured by Gusmer-Admiral.

A spring loaded, mechanical face seal housed in an environmentally sealed reservoir provides an industry leading service life and ease of maintenance not available with the conventional lip seal used by competitors.

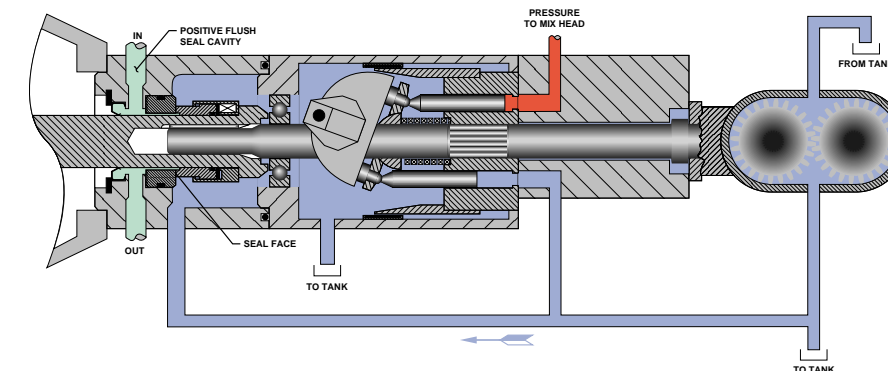
The supercharged inlet provides the following positive benefits:

The Gusmer-Admiral design balances inlet pressure with case pressure to equalize the hydrostatic load on the individual metering pistons. This results in unprecedented metering accuracy through a wide range of viscosities and pressures.

A trickle flow of temperature conditioned material lubricates and cools the mechanical shaft seal.

A 30% excess flow rate is available to the heat exchanger to provide consistent temperature control.

The RimCell metering system has been field proven and accepted to perform with accuracy and repeatability well within the tolerances generally required by systems specifications. This complete system is offered as standard equipment. There are no options when it comes to metering accuracy and service life at Gusmer-Admiral.



STANDARD FEATURES

Metering System

- Two axial piston pumps with handwheels for adjustment of throughput and ratio.
- Gusmer-Admiral's mechanical shaft seal system extends pump life and reduces maintenance.

Low Pressure Recirculation

- Low pressure loop reduces energy consumption of the machine and extends pump life by allowing the metering pumps to idle at reduced loading.

Programmable Logic Control System (PLC)

- User friendly touch screen data entry system.
- Readout of throughput and ratio.
- Remote Operation Switch.
- 99 shot time memory.
- Can be interfaced with existing presses and production line control systems.

Flow Measuring System

- The Gusmer-Admiral flow measuring system provides accurate digital readout of flow while eliminating the mess and inconvenience of wet calibration.

Integrated Feed System

- Completely closed loop system with feed pump and pressure regulator to assure constant pressure flooding of metering pump inlet.
- Allows precise dispensing of higher viscosity materials.

Fixed Boom

- Supports mix head for easy access to molds and pouring targets.
- 8 ft. boom swings 90° with several preset height settings.



Programmable Logic Control System (PLC)

Raw Material Tanks

- 60 gallon (225 liter) ASME coded steel tanks constructed for operation at 110 psi (7 bar).
- Low level shut off automatically stops dispensing when chemicals fall below pre-set level.
- Tank liquid levels are easily monitored with an external tank visual level display system.
- Tube and shell heat exchangers are mounted in the return line to tank to provide temperature control with plant water or optional heating and cooling systems. Includes an integral 7 kw heater with digital panel control.
- Tank stand provides modular positioning of tanks with open construction for easy maintenance access.
- Pressure relief safety system.

Raw material day tanks



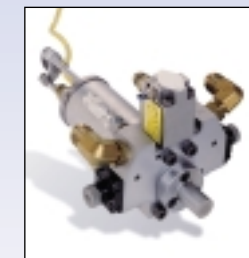
- Integrated dry air or optional nitrogen system provides moisture free blanket for tanks.
- Several optional tank sizes are also available.

Mixing Heads

- All Gusmer-Admiral RIM machines come standard with a high performance, hydraulically operated, mechanically self-cleaning mixing head.
- A wide variety of standard and specialty application mix heads are available to meet your production requirements.

Hydraulic Power Pack

- Provides controlled opening power to the mixing head(s).
- Opening speed can be varied.



Gusmer-Admiral L-style mixing head



Modified Axial Piston Pumps